

# Your Neutral Intermodal Operator



**BALCO**  
www.balo.tc





Büyük Anadolu Lojistik Organizasyonlar

## WE ARE OFFERING OUR SERVICE TO END CUSTOMERS VIA LOGISTIC SERVICE PROVIDERS.

BALO is supporting the logistics sector as a neutral intermodal operator with freight, volume, equipment, transit time and traceability and also supporting the expectation of sustainability as an environmental, economical and reliable system.



### TURKEY - EUROPE

DEPARTURE		ARRIVAL							
Tekirdağ		Sopron		Giengen		Ludwigshafen		Duisburg	
Day	Time	Day	Time	Day	Time	Day	Time	Day	Time
Wednesday	18:00	Monday	14:00	Wednesday	04:00	Wednesday	08:00	Wednesday	08:00
Friday	18:00	Wednesday	14:00	Friday	04:00	Friday	08:00	Friday	08:00
Sunday	18:00	Friday	14:00	Sunday	04:00	Sunday	08:00	Sunday	08:00

### EUROPE - TURKEY

DEPARTURE								ARRIVAL	
Duisburg		Ludwigshafen		Giengen		Sopron		Tekirdağ	
Day	Time	Day	Time	Day	Time	Day	Time	Day	Time
Monday	06:00	Monday	12:00	Monday	12:00	Tuesday	16:30	Monday	08:00
Wednesday	06:00	Wednesday	12:00	Wednesday	12:00	Thursday	16:30	Wednesday	08:00
Friday	06:00	Friday	12:00	Friday	12:00	Saturday	16:30	Friday	08:00

\* BALO keeps its right to change the tariff as necessary

## ABOUT US

BALO is offering railway based intermodal service to logistics sector. It was established with 94 shareholders in 2011 by the participation of the Chambers of Commerce, Commodity Exchanges and Organized Industrial Zones from a lot of regions of Turkey in the leadership and attendance of The Union Of Chambers and Commodity Exchanges of Turkey (TOBB) which is the roof non-governmental organization of Turkish business sector.

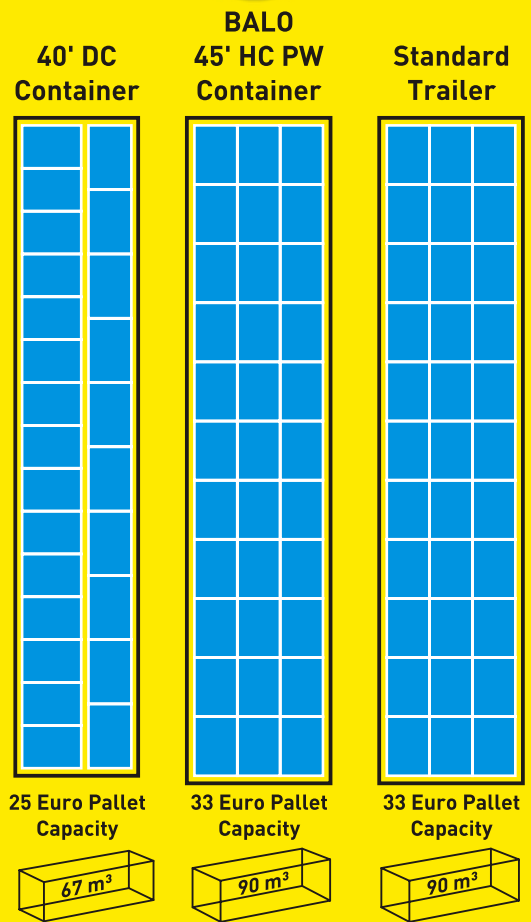
Corporate structuring preparations of BALO are carried out in 2012 of which UTIKAD (International Transportation and Logistics Service Providers Association) is a partner. BALO has started presenting the block train services and freight shipment to logistic service providers in 2013.

BALO is organizing 3 block trains weekly between Anatolia and Europe and is planning to reach daily blocktrains.

BALO contributes as a neutral operator with advantages of freight, volume, transit period and traceability to logistics sector; supports the expectation of sustainability especially as an environmentalist, economical, and reliable system.



**33%**  
VOLUME  
ADVANTAGE



### Volume Advantage

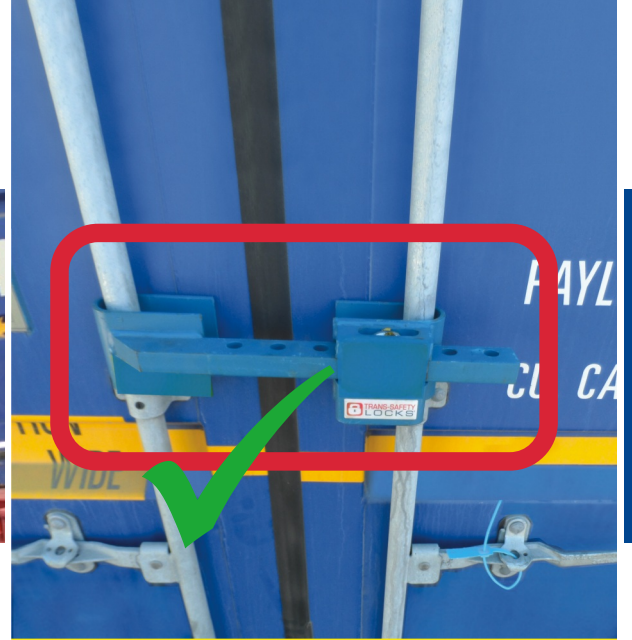
In BALO System, instead of 40' DC containers, the more effective 45' HCPW (High Cube Pallet Wide) containers are used.

These containers are produced specially for 80x120 and 80x100 pallet standards, have more pallet capacity than standard 40' containers and also have an equal volume of a standard trailer.



P400 wagons for crainable trailers





## STRONG COMPANY STRUCTURE

BALO is getting its power from the collaboration of the producers, manufacturers, commerce and logistic sector representatives to constantly improve the existence of intermodal carriage in Turkey.

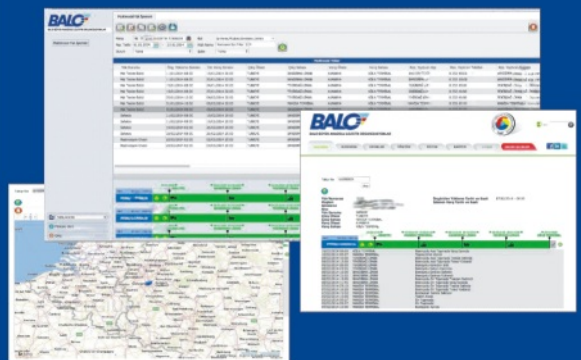
### Security

Containers are loaded to the block trains as the doors are facing each other with special security locks in order to provide security. This provides the maximum available security during transport.

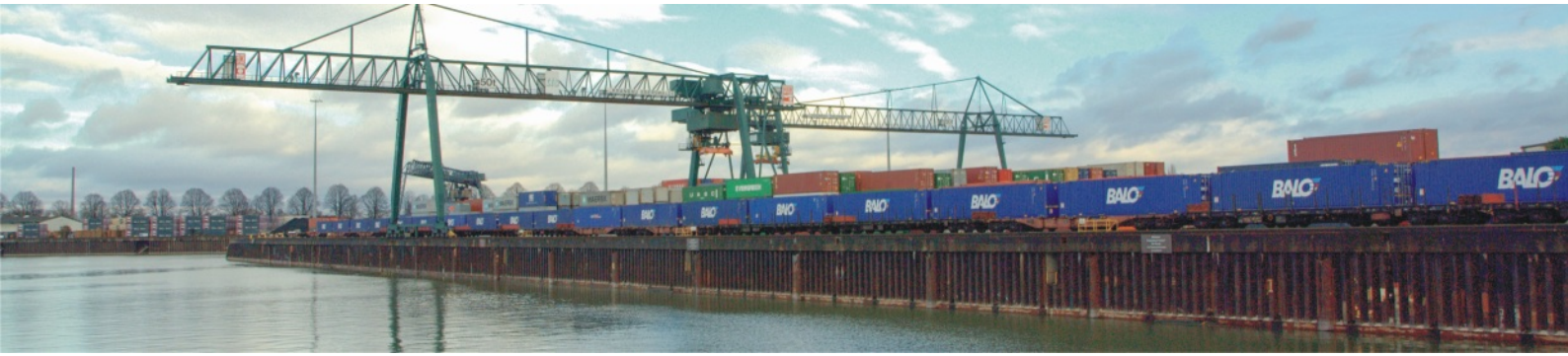


### Online Track & Trace

In BALO system, containers can be tracked till loading point to delivery point via BALO electronic track and trace system.







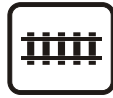
# SYSTEM

(EXAMPLE)

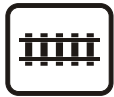
Loading @ Ankara



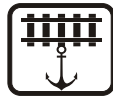
Ankara Terminal



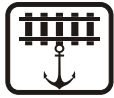
Ankara Terminal



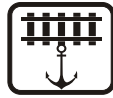
Bandırma Trimodal Terminal



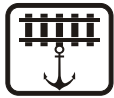
Bandırma Trimodal Terminal



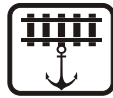
Tekirdağ Trimodal Terminal



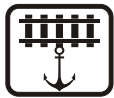
Tekirdağ Trimodal Terminal



Duisburg Trimodal Terminal



Duisburg Trimodal Terminal



Customer Delivery



BALO's scheduled block trains depart just on time.

## Service Frequency Current Situation

3 block trains per week per direction.

## At the end of 2015

10 block trains per week per direction.



Green Logistic







## OUR TERMINALS

- RRT Duisburg - Germany
- KTL Ludwigshafen - Germany
- Giengen (Brenz) - Germany
- Gysev Sopron - Hungary
- Tekirdağ - Turkey
- Bandırma - Turkey

## Customs Procedures

In the departure custom office, transit document (T1/T2) is furnished and the container can be forwarded till its arrival custom point under the custom seal.

Even if the transport mode is changed from land to sea or sea to rail, the same transit document is used.

When the container arrives the final custom point, clearance is made and the shipment will be ready for delivery.



# BALO Büyük Anadolu Lojistik Organizasyonlar



[www.balo.tc](http://www.balo.tc)

**BALCO**